

Block 1-A

Floor	Parking**	Retail		Residential SF	Gross SF.
1st***	3,397	7,400		16,796	27,593
2nd				28,076	28,076
3rd				28,076	28,076
4th				28,076	28,076
5th				28,076	28,076
6th				28,076	28,076
7th				28,076	28,076
TOTAL		7,400		185,252	196,049

Block 1-B

Floor	Parking**	Retail		Residential SF	Gross SF.
G1		15,000			15,000
1st***	1,652	30,237		2,672	34,561
2nd				22,020	22,020
3rd				24,470	24,470
4th				24,470	24,470
5th				24,470	24,470
6th				24,470	24,470
TOTAL		45,237		122,572	169,461

Block 5-B

Floor	Parking**	Retail	Office	Residential SF	Gross SF.
G2	26,100				0
G1	14,493				0
1st***	14,493	5,113	2,346	4,137	26,089
2nd			20,904	0	20,904
3rd				19,434	19,434
4th				19,434	19,434
5th				19,434	19,434
6th				19,434	19,434
7th				17,220	17,220
TOTAL	14,493	5,113	23,250	99,093	141,949

* Note: area at ground level includes loading and service.

**Note : Final count TBD by final design.

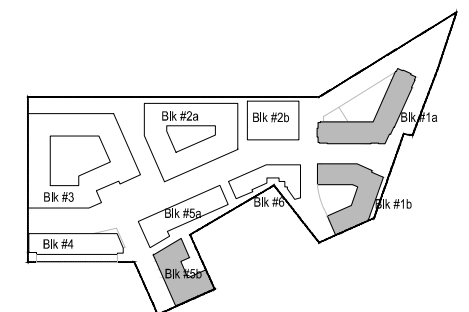
***Note : Parking at 1st floor will count towards FAR



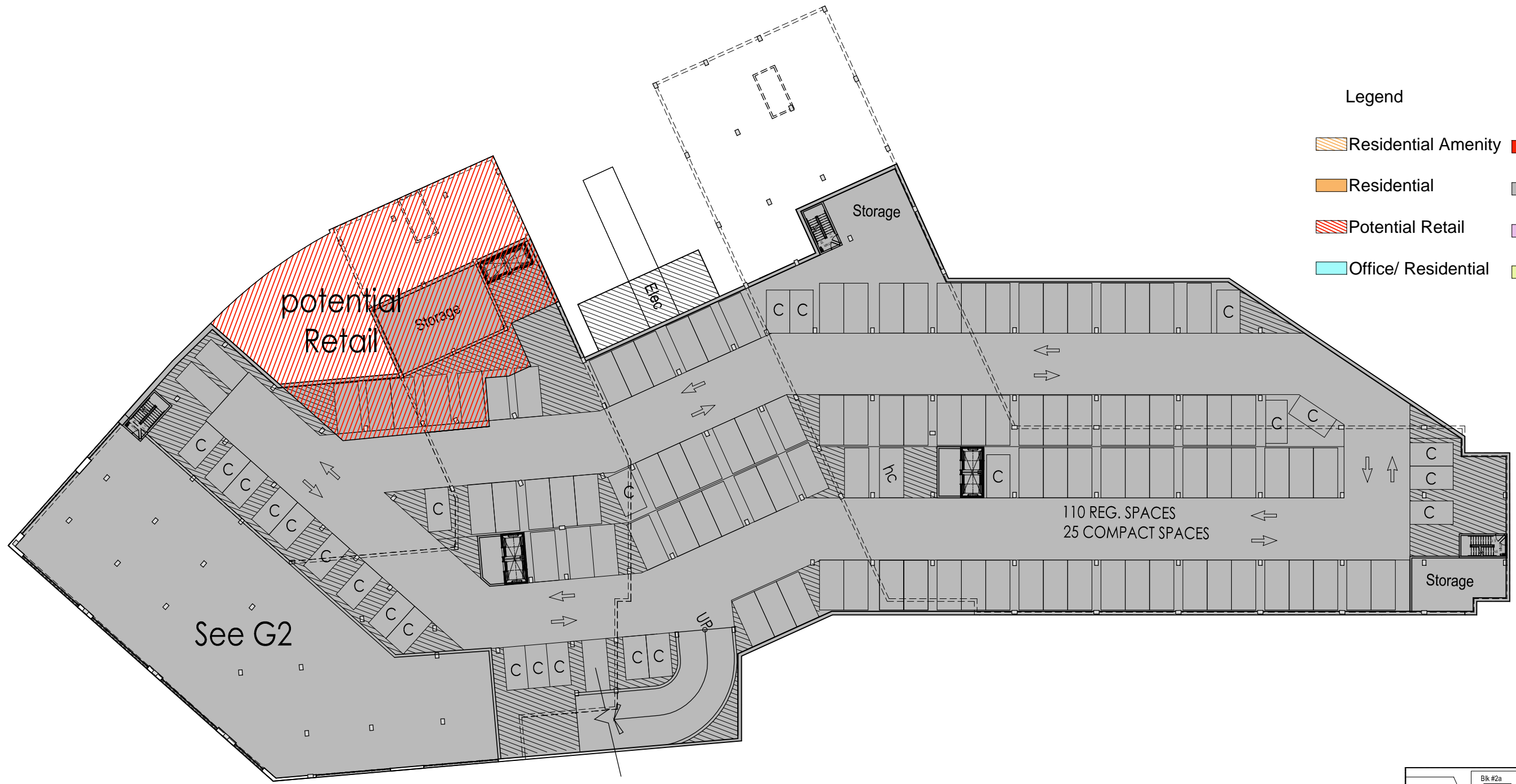
VIEW FROM NORTHWEST



VIEW FROM SOUTHEAST

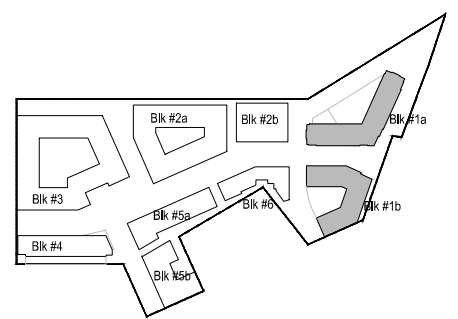


KEY PLAN



Legend

	Residential Amenity		Retail
	Residential		Service/Parking
	Potential Retail		Grocery
	Office/ Residential		Theatre

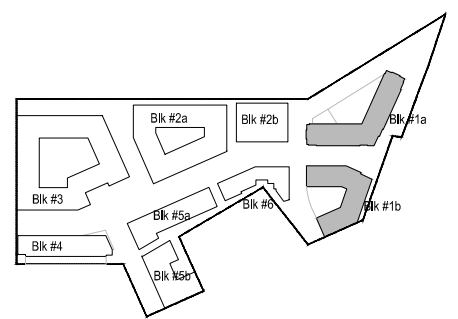
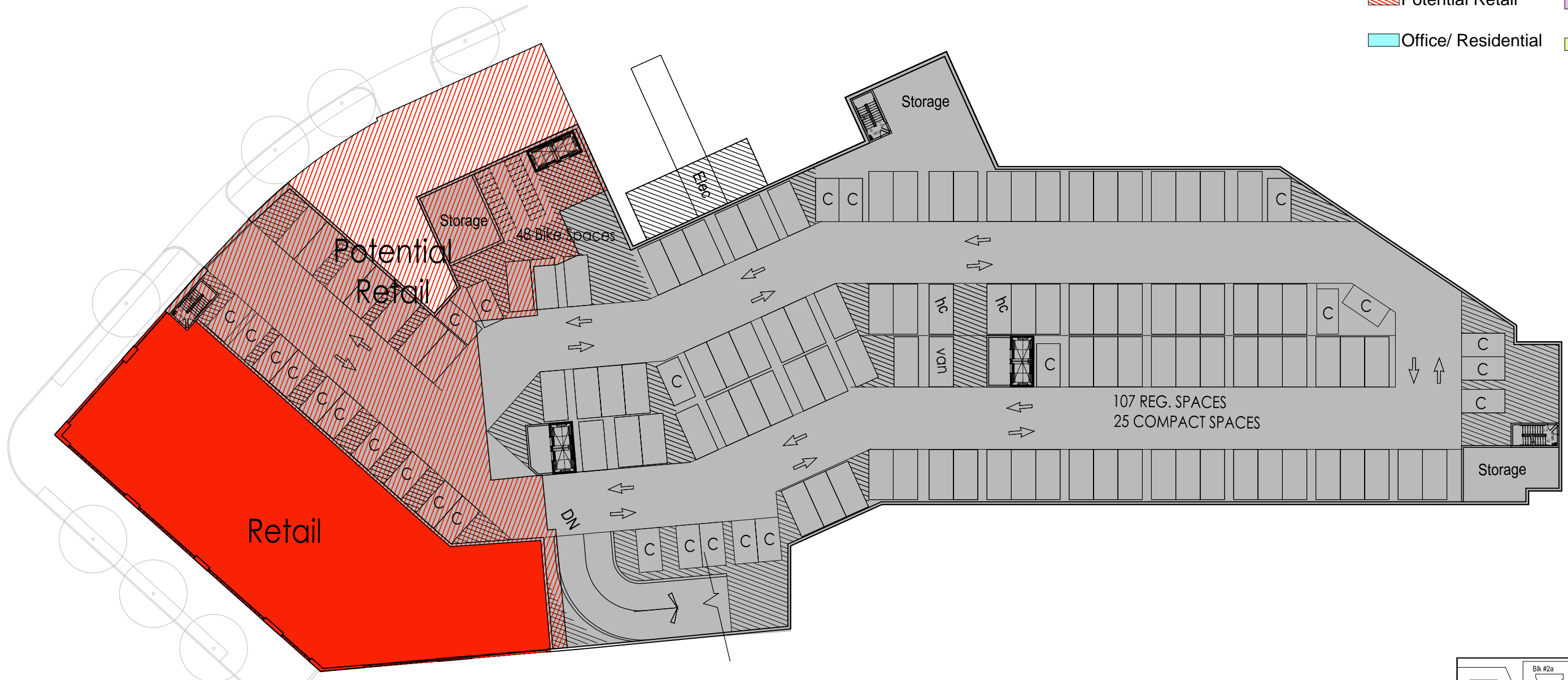


KEY PLAN



Legend

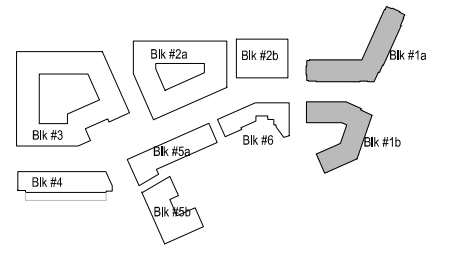
- Residential Amenity
- Residential
- Potential Retail
- Office/ Residential
- Retail
- Service/ Parking
- Grocery
- Theatre



KEY PLAN



- Legend
- Residential Amenity
 - Residential
 - Potential Retail
 - Office/ Residential
 - Retail
 - Service/ Parking
 - Grocery
 - Theatre

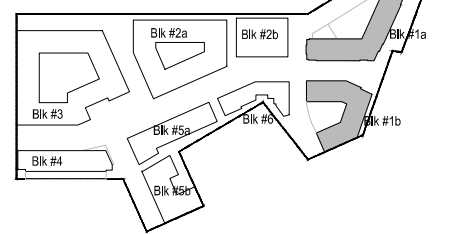
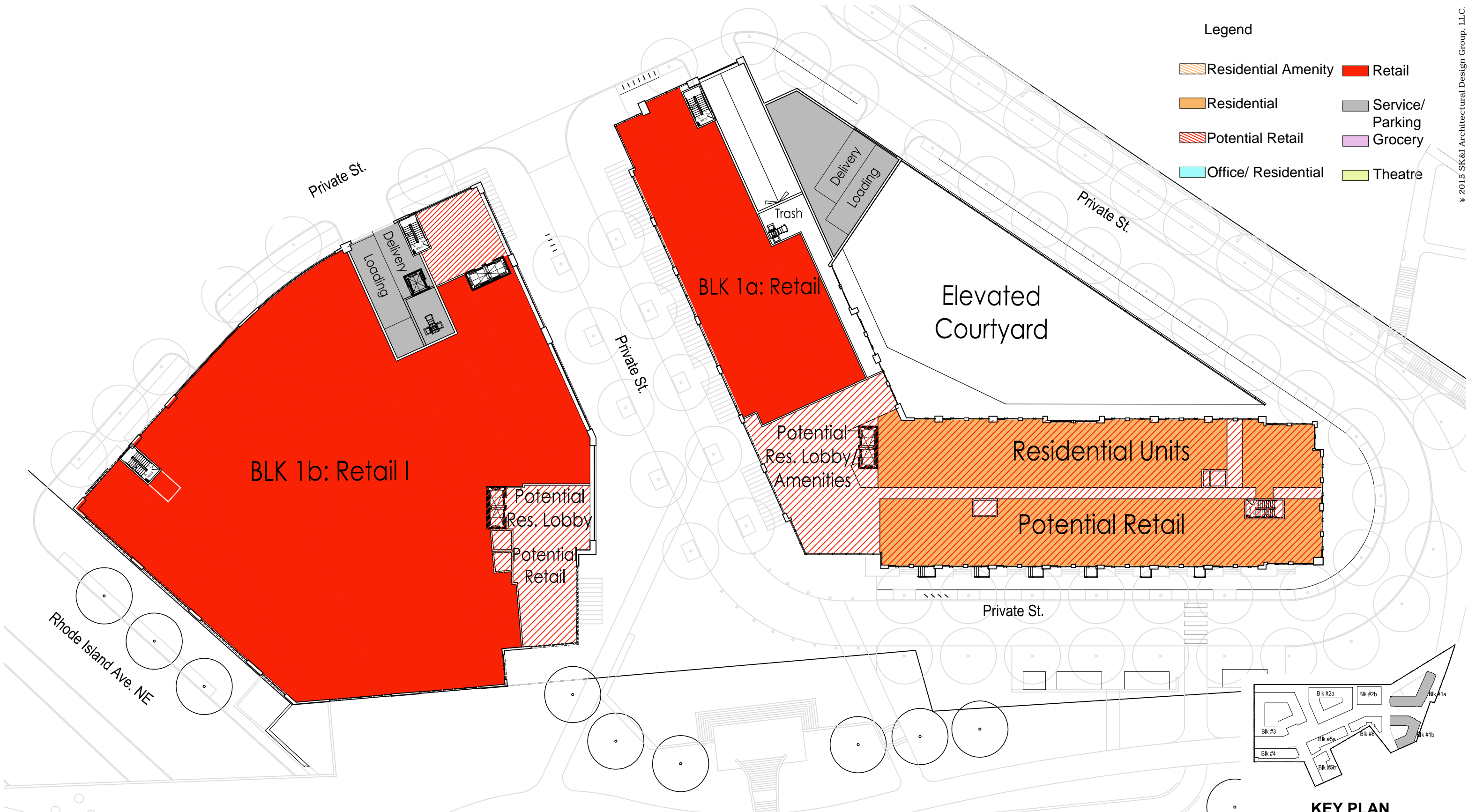


KEY PLAN



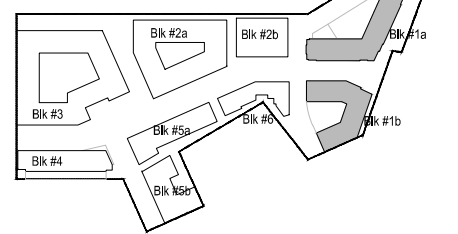
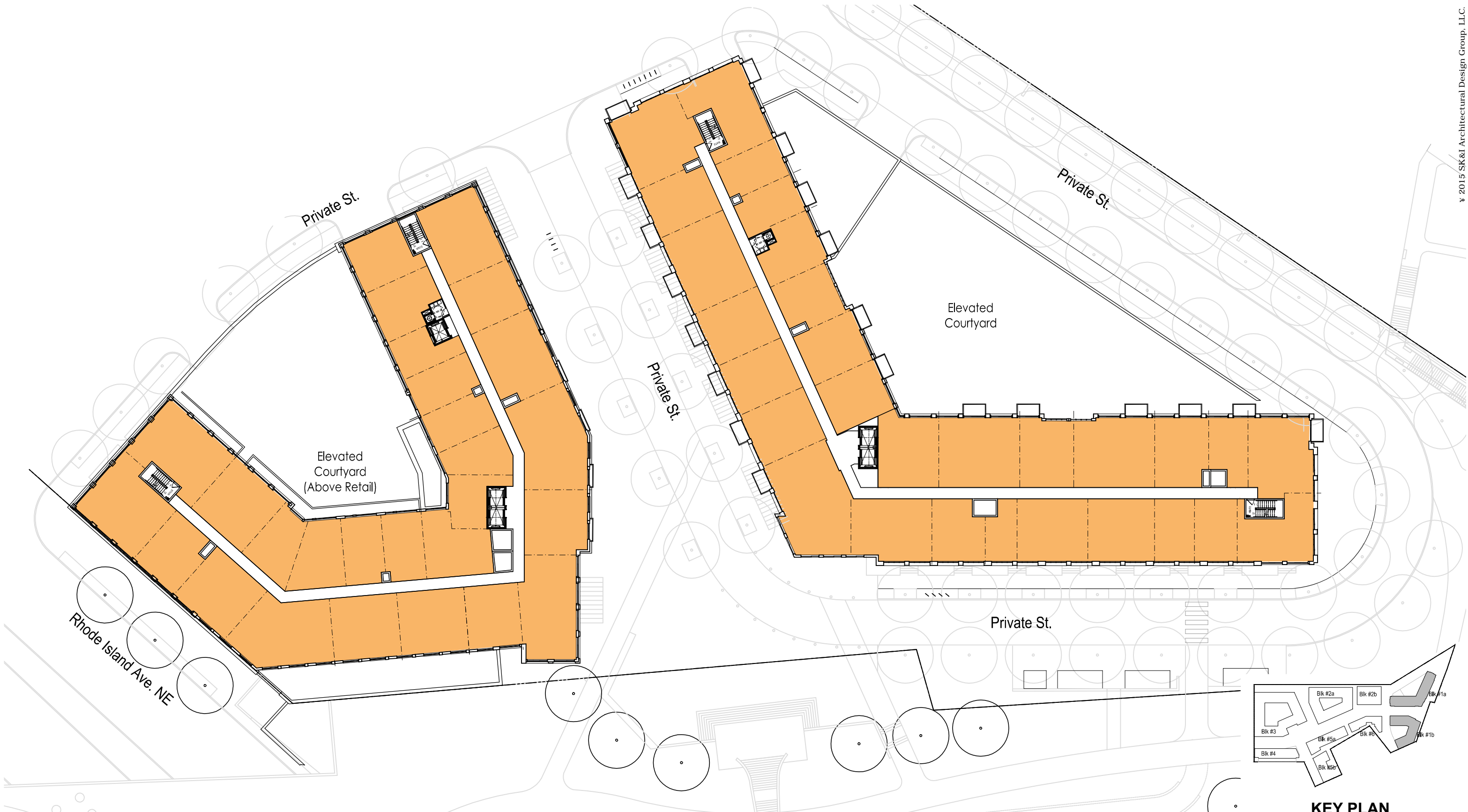
Legend

- Residential Amenity
- Residential
- Potential Retail
- Office/ Residential
- Retail
- Service/ Parking
- Grocery
- Theatre



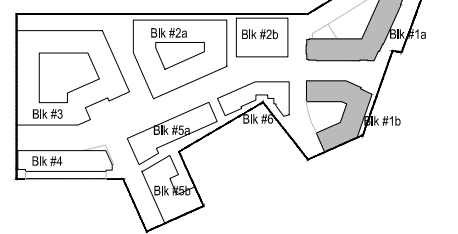
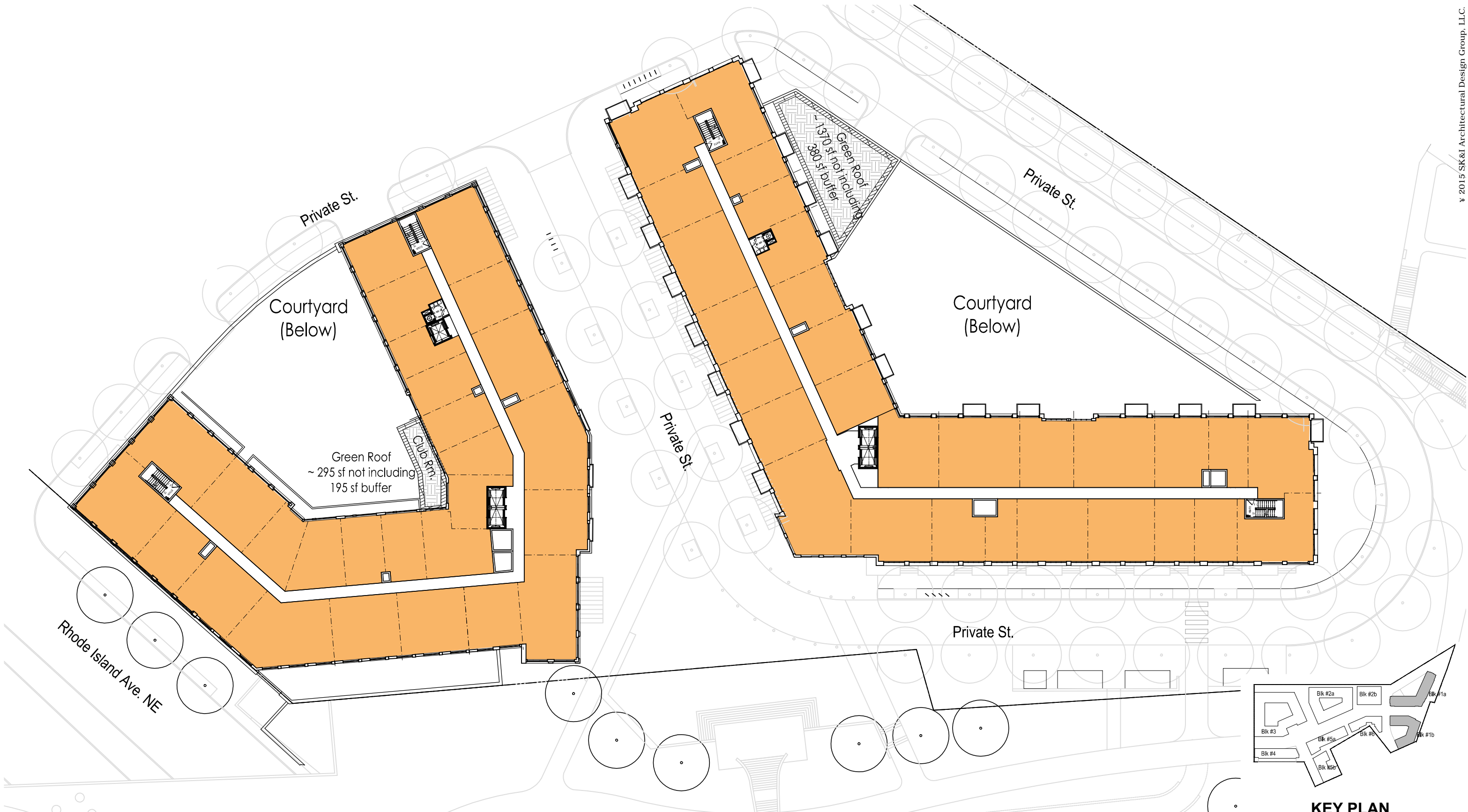
KEY PLAN





KEY PLAN







KEY PLAN

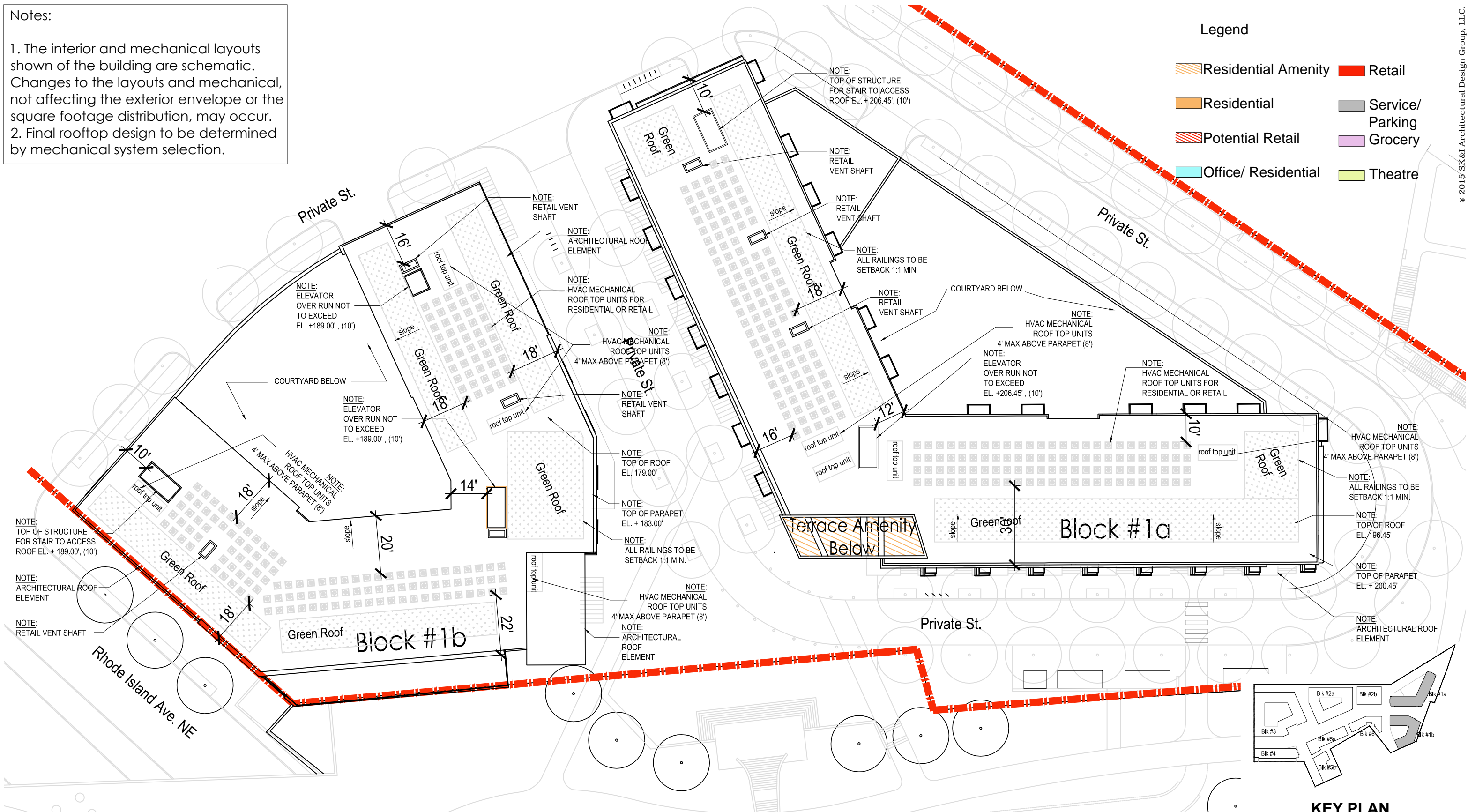


Notes:

1. The interior and mechanical layouts shown of the building are schematic. Changes to the layouts and mechanical, not affecting the exterior envelope or the square footage distribution, may occur.
2. Final rooftop design to be determined by mechanical system selection.

Legend

-  Residential Amenity
-  Retail
-  Residential
-  Service/Parking
-  Potential Retail
-  Grocery
-  Office/ Residential
-  Theatre



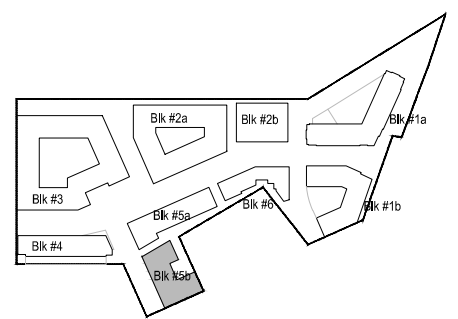
KEY PLAN





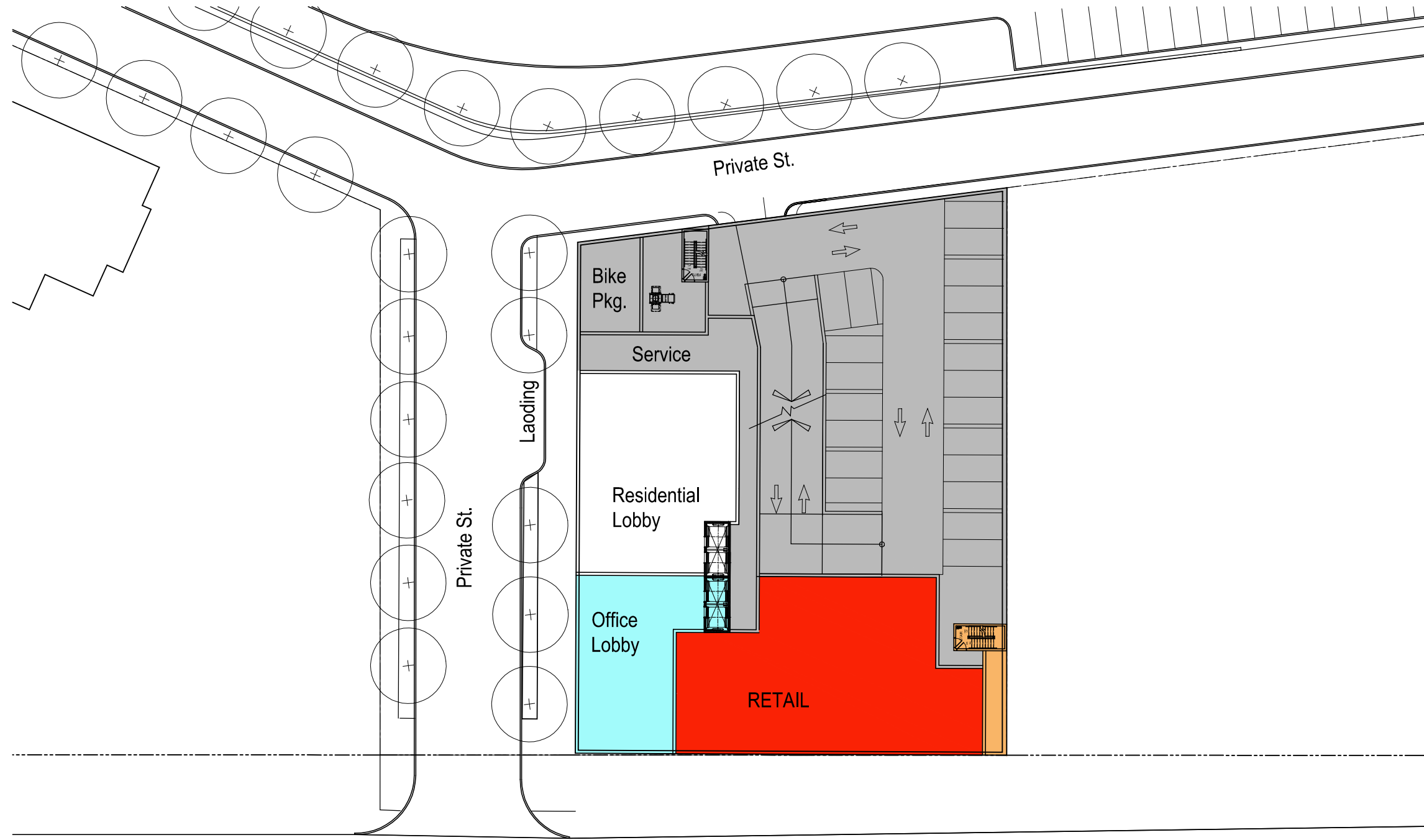
Legend

Residential Amenity	Retail
Residential	Service/Parking
Potential Retail	Grocery
Office/ Residential	Theatre



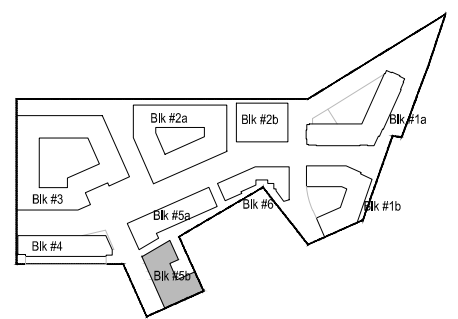
KEY PLAN





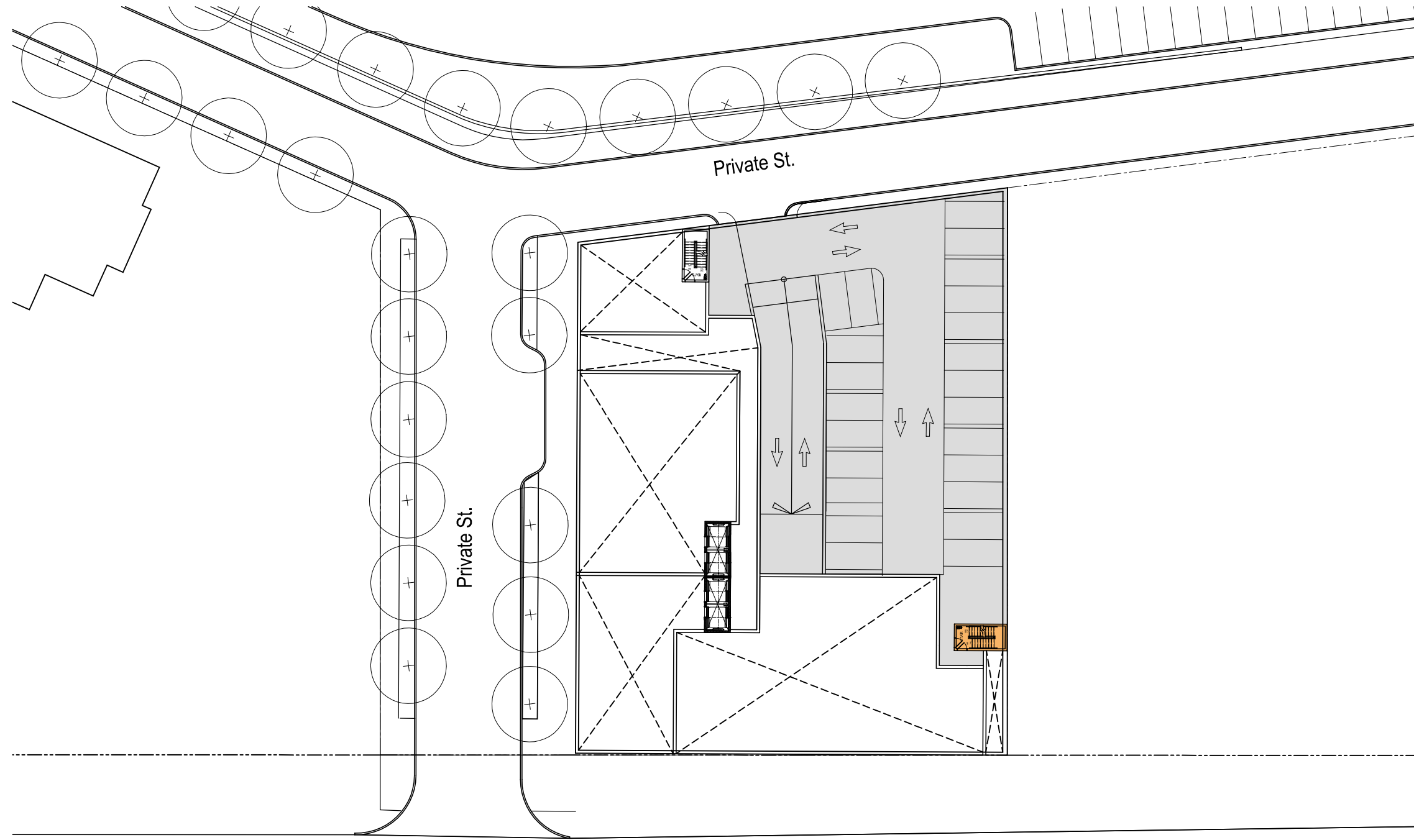
Legend

Residential Amenity	Retail
Residential	Service/ Parking
Potential Retail	Grocery
Office/ Residential	Theatre

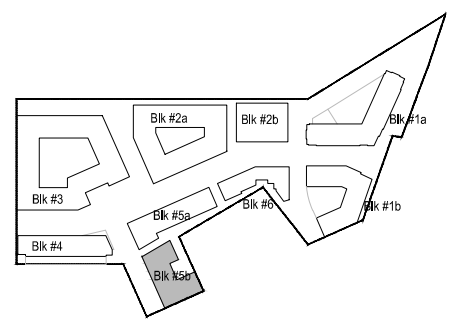


KEY PLAN



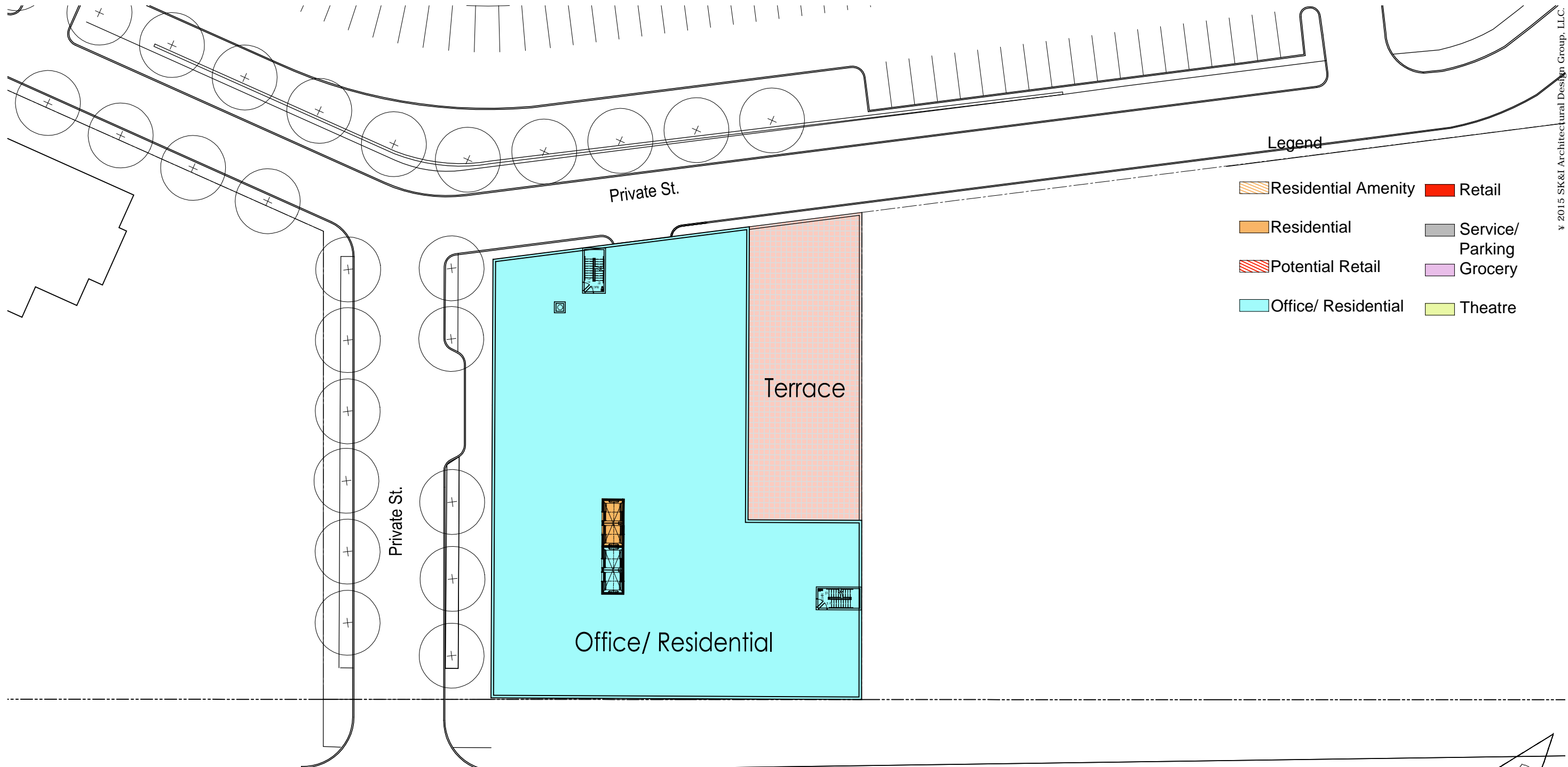


- Legend**
- Residential Amenity
 - Residential
 - Potential Retail
 - Office/ Residential
 - Retail
 - Service/ Parking
 - Grocery
 - Theatre



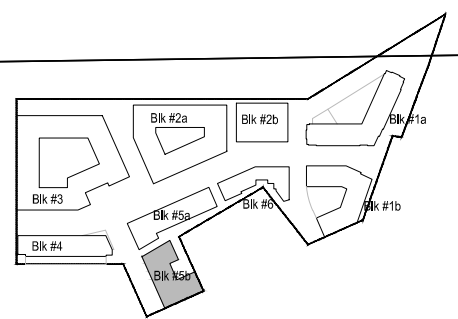
KEY PLAN





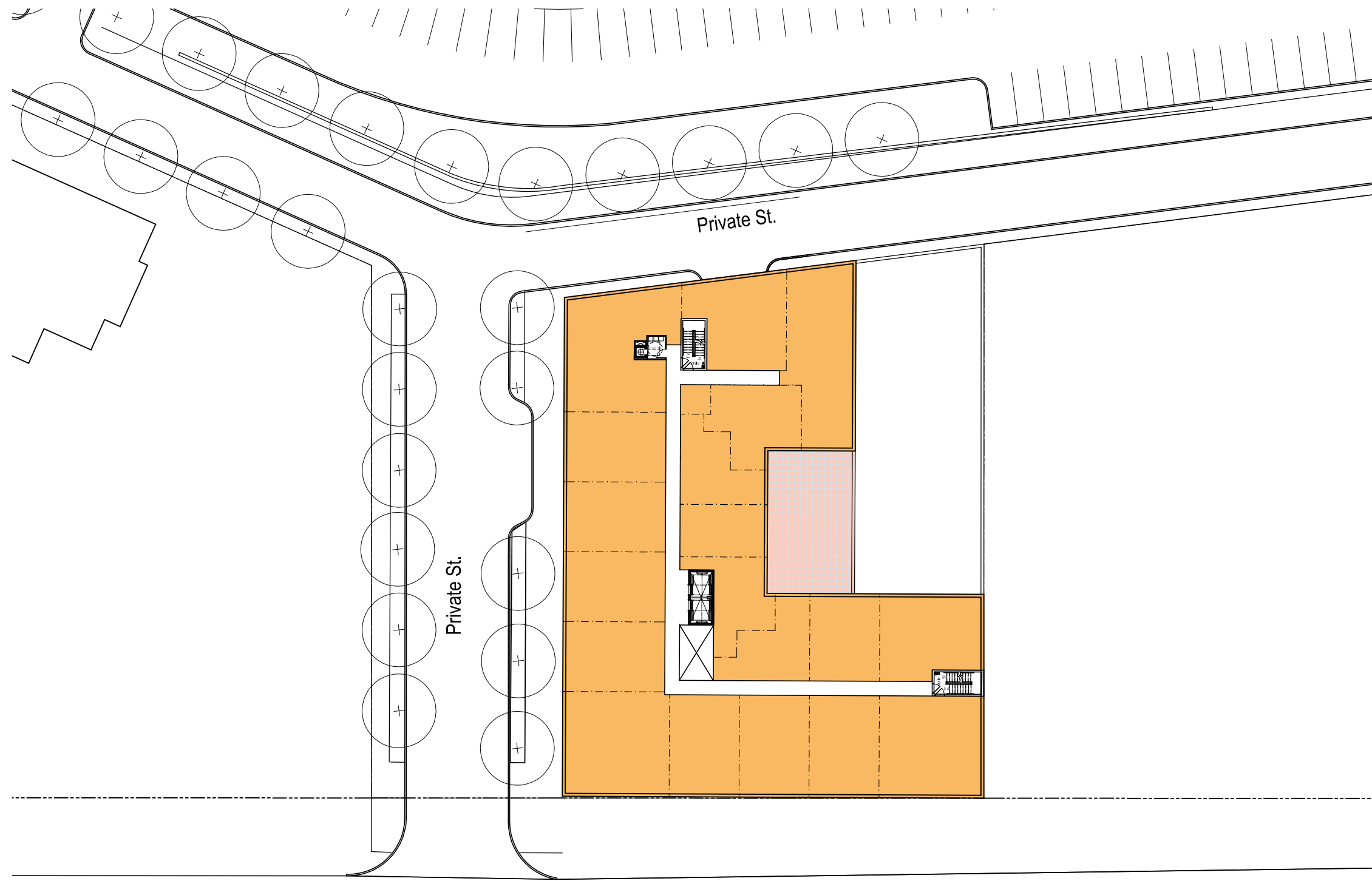
Legend

Residential Amenity	Retail
Residential	Service/ Parking
Potential Retail	Grocery
Office/ Residential	Theatre

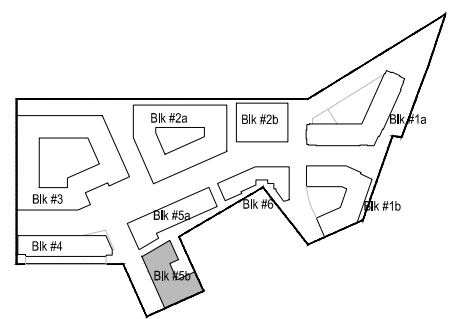


KEY PLAN



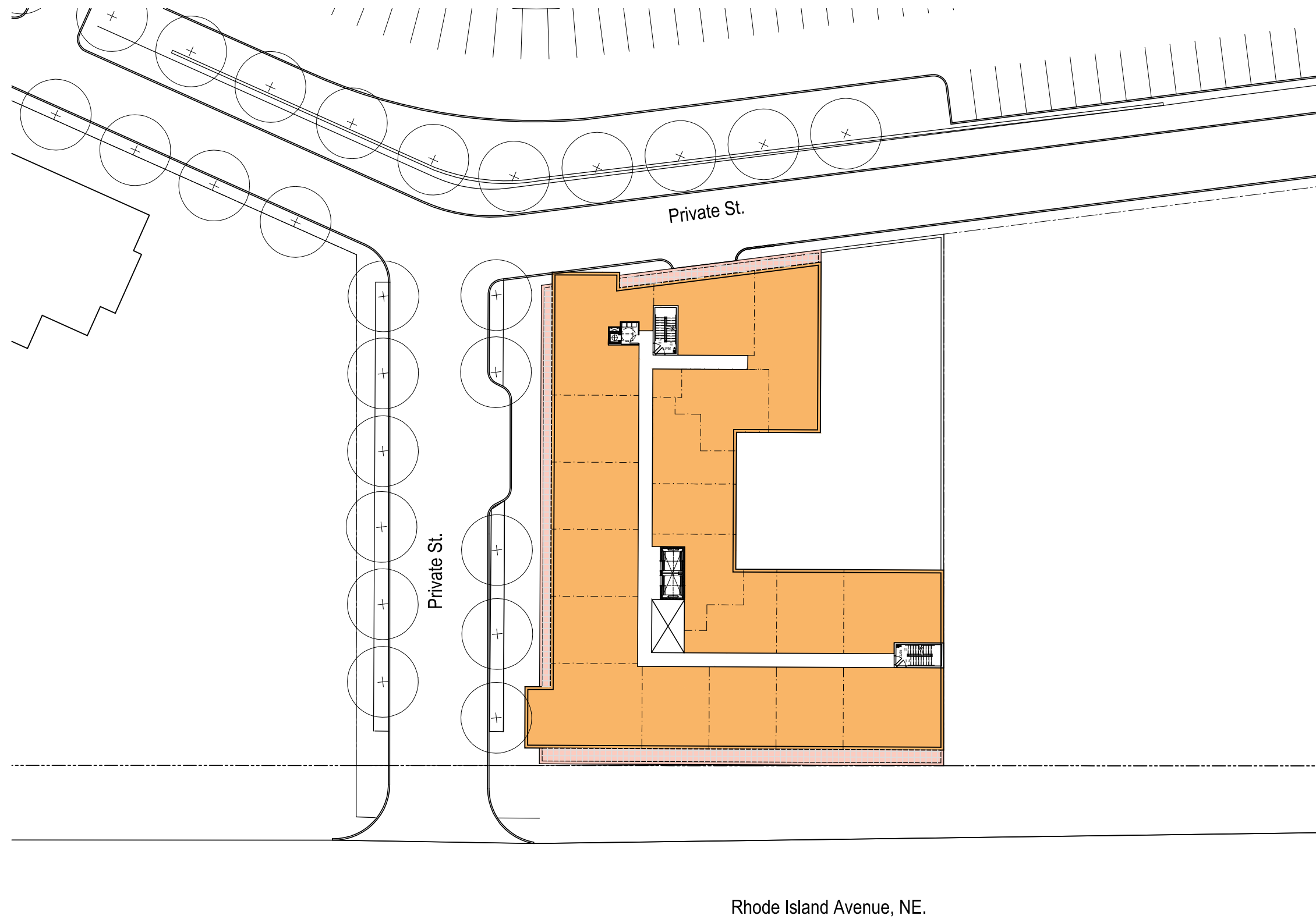


- Legend**
- Residential Amenity
 - Residential
 - Potential Retail
 - Office/ Residential
 - Retail
 - Service/ Parking
 - Grocery
 - Theatre

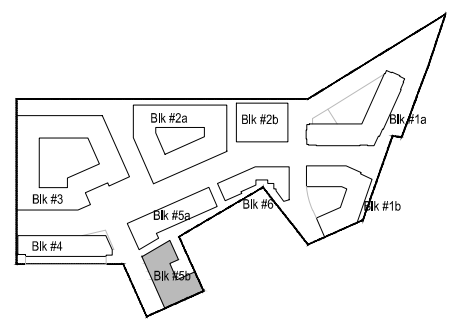


KEY PLAN





- Legend**
- Residential Amenity
 - Residential
 - Potential Retail
 - Office/ Residential
 - Retail
 - Service/ Parking
 - Grocery
 - Theatre

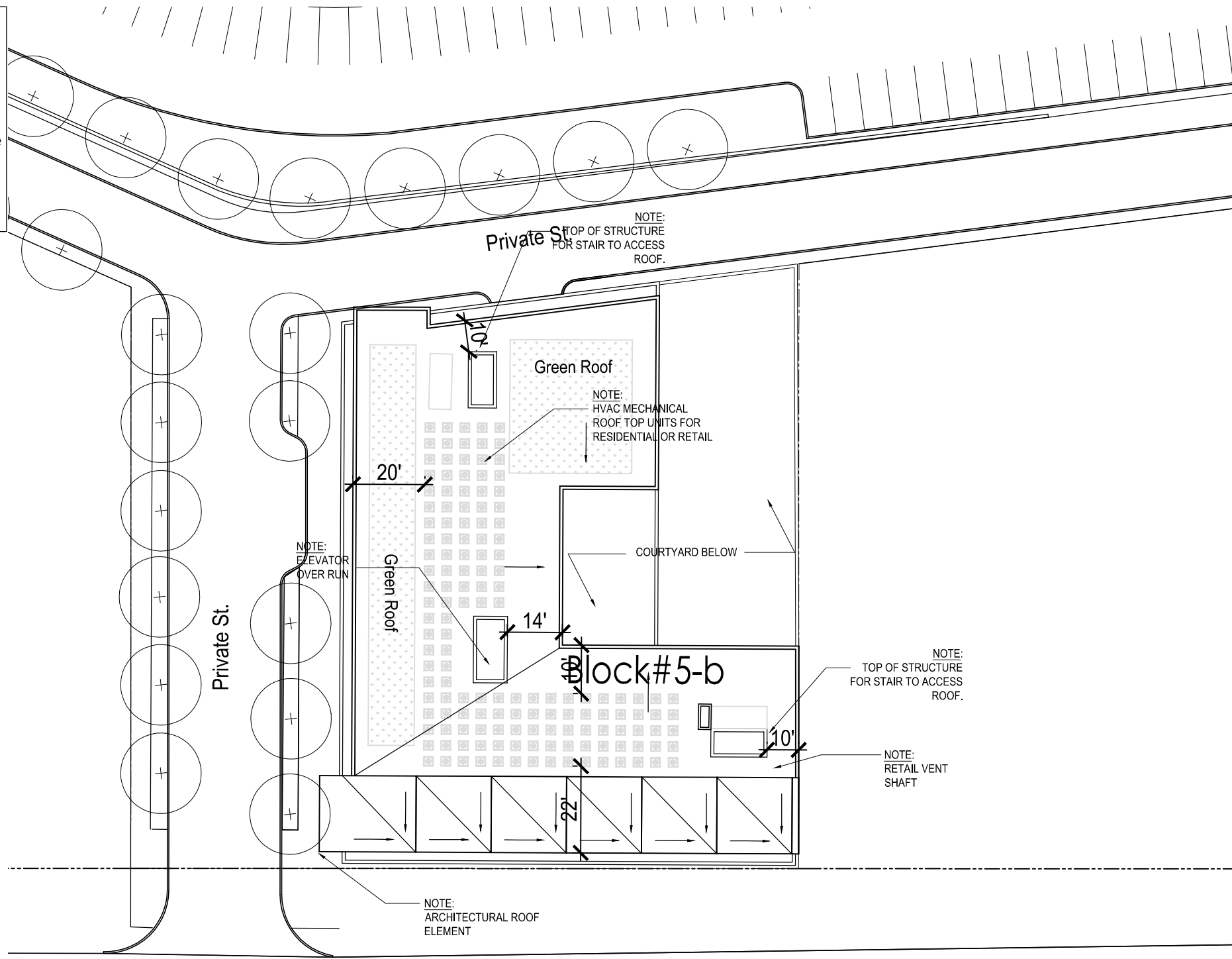


KEY PLAN



Notes:

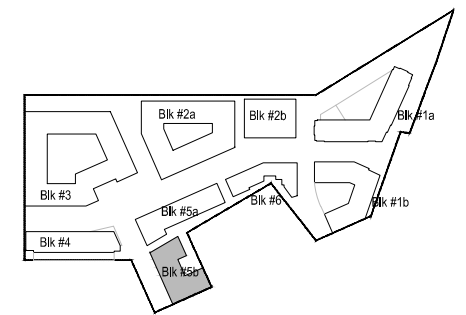
1. The interior and mechanical layouts shown of the building are schematic. Changes to the layouts and mechanical, not affecting the exterior envelope or the square footage distribution, may occur.
2. Final rooftop design to be determined by mechanical system selection.



Legend

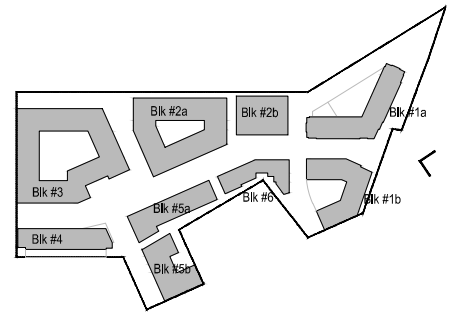
Residential Amenity	Retail
Residential	Service/ Parking
Potential Retail	Grocery
Office/ Residential	Theatre

Rhode Island Avenue, NE.



KEY PLAN





KEY PLAN

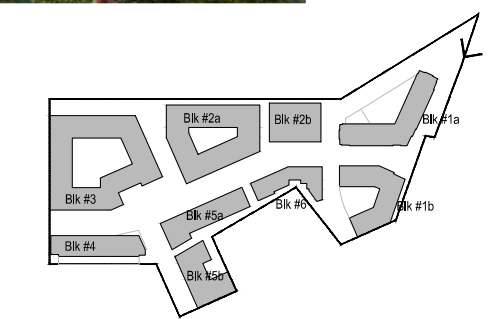
MRP | REALTY

680 Rhode Island Ave. | Washington, DC

April 29, 2016 | 1.201

SK+I
ARCHITECTURE

Perspective



KEY PLAN

MRP | REALTY

680 Rhode Island Ave. | Washington, DC

April 29, 2016 | 1.202

SK+I
ARCHITECTURE

Perspective